

COLLEGE



bell
AWARDS
2020 WINNER
COMPANY OF THE YEAR



scanningpens.com

£230

Ex VAT

NEW!

C-PEN™

EXAM READER 2™

“91% of students improved their grades with the Exam Reader 2™, 74% by 3 grades or more.” - Dr. Trudy Coleman, City Academy Norwich



Improve grades



Increase exam productivity



Reduce exam costs



JCQ approved, no access arrangements required



Consistent support every time

FREE TRIALS AVAILABLE!



www.scanningpens.co.uk



Start a conversation with your

MANCHESTER COLLEGE

88%

of students said they would recommend the Exam Reader 2™

100%

of students found the Exam Reader 2™ either easy or very easy to use

“

“Many students face difficulties in processing information and students with dyslexia can sometimes misread questions during exams or when completing independent work. This can lead them to write a great answer to the incorrect question, the Exam Reader 2™ greatly assists in minimising these mistakes and improving the learning outcomes for our supported students.”

- Bradford College

”

Find out how Bradford College has been using text-to-speech tech to support learning



“One of the major successes came from our Trowbridge campus whereby three mature students studying hairdressing used them for revision and exams. Having been out of education for some time, Students A, B and C had returned to study a Level 3 Qualification. All three students had struggled previously at school and, although all three were technically and practically very able, they struggled to access the carrier language of the technical exams. They approached LSDS to discuss their needs and the LSDS Assessor advised that the Exam Reader 2™ may be a suitable option for them. The students took it in turns to trial both the Reader 2™ and the Exam Reader 2™ for accessing class content, revision notes, reading through text books and for practice exams. As the pen became their normal way of working throughout the months leading up to the exam, it was agreed that the students could use the Exam Reader 2™ in their next exam. As a result, all students then passed the exam which they had previously failed. Students A, B and C were elated, and their confidence improved tenfold as they were able to demonstrate their true knowledge and subsequently, they grew in confidence.”

- Specialist Co-Ordinator for Exam Access Arrangements, Wiltshire College

students about exam success

EXAM BOARD GUIDANCE

Give students a consistent tool for support with the **C-Pen Exam Reader 2™**.

This is a device to support reading. It is Joint Council for Qualifications (JCQ) permitted and approved accommodation. You can find information about this accommodation on page 55 of the JCQ regulations 22-23:

The Exam Reader 2™ can be used in all exams including BTEC, Functional Skills, GCSE's & A-Levels.

Joint Council for Qualifications (JCQ) 2022-2023

Chapter 5 Access arrangements and adjustments

The access arrangements/reasonable adjustments listed within this chapter apply to the following qualifications:

- AQA Applied General qualifications
- AQA Level 1, Level 2 and Level 3 Technical qualifications
- BTEC First
- BTEC Nationals
- BTEC Tech Awards
- Cambridge Nationals
- Cambridge Technicals
- CCEA Key Skills
- City & Guilds Level 2 and Level 3 Technical qualifications
- Entry Level Certificate qualifications (ELC)
- Free Standing Mathematics Qualifications (FSMQ)
- GCE
- GCSE
- OCR Level 3 Certificates
- WJEC Baccalaureate Qualification (WBQ)
- WJEC Essential Skills (Wales)
- WJEC Level 1 and Level 2 General qualifications
- WJEC Level 1 and Level 2 Vocational qualifications
- WJEC Level 3 Applied qualifications

(where permitted by the specifications)

The principles will be the same across all qualification types across arrangements and adjustments **must not** be allowed to interfere with the integrity of the assessment or to give credit for skills, knowledge and understanding which cannot be demonstrated by the candidate.

Candidates should bear in mind that they will have duties towards disabled candidates, including a duty to make reasonable adjustments to the service they provide to candidates. **Where the centre is unable to make a reasonable adjustment, it must not charge a disabled candidate any additional fee in relation to the adjustment or and.**

The SENCO **must** undertake the necessary and appropriate steps to gather an appropriate picture of need and demonstrate normal way of working for a private candidate. This must be included in the assessment process. The candidate **must** be assessed by the centre. In some instances, depending on their needs, the candidate **must** come to be assessed away from the centre, for example at home. The centre **must** comply with the obligation to identify the need for, and implement access arrangements/reasonable adjustments.

5.6 Read aloud and/or the use of an examination reading pen*

*there is **not** a requirement to process an application for read aloud and/or the use of an examination reading pen using Access arrangements online. No evidence is needed to support the arrangements for inspection purposes.

Read aloud

5.6.1 It can make a significant difference to a candidate who **persistently** struggles to understand what they have read to read aloud. Where a candidate is reading difficult text, **helped** may work more effectively if they can hear themselves read.

5.6.2 The arrangement **must** reflect the candidate's **normal way of working** in internal school tests and mock examinations.

5.6.3 A candidate who reads aloud to himself/herself **must** be accommodated in another room, away from the main examination room.

5.6.4 A candidate **must not** use a reader but **must** determine this arrangement in a paper (trial script) or a paper's testing reading which **must** permit them to use a maximum of 50% extra time.

Examination reading pen

5.6.5 A permitted examination reading pen **will not** have an in-built dictionary or thesaurus, or a data storage facility.

The use of an examination reading pen, **provided by the centre**, might benefit those candidates who wish to work independently. It may increase the independence of candidates who needed a reader for accuracy rather than comprehension.

The use of an examination reading pen might also benefit those candidates who only require occasional words or phrases to be read to them.

An examination reading pen may be used in papers (or sections of papers) testing reading. However, the candidate **cannot** additionally be granted up to a maximum of 50% extra time in place of the reader.

Example - examination reading pen

A candidate was found to be mildly dyslexic in year 7. The candidate has always used a reader in internal school tests.

However, the SENCO trials the use of an examination reading pen which subsequently becomes her **normal way of working within the centre**. It is an effective arrangement, appropriate to her needs.



Use of Technology

SENCo's may wish to consider the use of technology to a much greater extent instead of readers and scribes. Computer readers, examination reading pens, speech recognition technology and word processors not only allow candidates to work independently but are also a better preparation for Further and Higher Education and the world of employment.

Cambridge International Exam Board

A reading pen is a Group 1 Access Arrangement, which is centre delegated (2022). See Cambridge Assessment International Education for more information.

Scottish Qualifications Authority (SQA)

Under current SQA guidance, a centre would need to submit a request to SQA for a candidate to be allowed to use a C-Pen Exam Reader 2™ (this is a pen without a dictionary storage) in an external examination.

International Baccalaureate (IB)

The C-Pen Reader 2™ is a recognised support. You would need to apply to IB with evidence of need for authorisation.

Fill in the blank with the correct answer for these definitions based on the major lectures and literary





Examinations are a group experience. The wellbeing and confidence of learners who can participate fully, regardless of learning differences is greatly enhanced through the use of Exam Reader 2™. Exam Reader 2™ facilitates independent reading of exam questions, which can be listened to discreetly through earphones, enabling students to sit with their peers in the exam hall and receive support at the point of need.

What the C-Pen Exam Reader 2™ can do for you...



Rechargeable long-life battery



Supports in 10+ languages



Multiple accents included



Scan printed text to hear aloud or via included earphones



Append mode enables blocks of information to be read together



No storage features



Compact and portable



Approved for use in exams

**Consult awarding body for more information*

OTHER AWARD-WINNING SUPPORT AND READING DEVICES

C-PEN
READER 2™



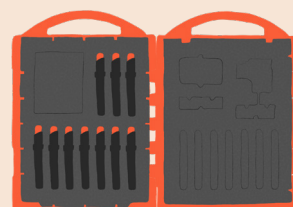
Incl. text reader, dictionary, data storage and voice recorder. See www.scanningpens.co.uk/ReaderPenUK

LINGOPEN™

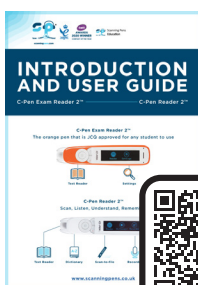


Instantly define and translate words. Great for those learning an additional language. See www.scanningpens.co.uk/LingoPenUK

Class Packs Available



C-Pen Exam Reader 2™ Free Support



Implementation Guide: Wider Deployment Approaches

DOWNLOAD



Sign Up For Our Webinars

MORE INFO



CONTACT US!



+44 (0)20 7976 4910



ukinfo@scanningpens.com



www.scanningpens.co.uk